

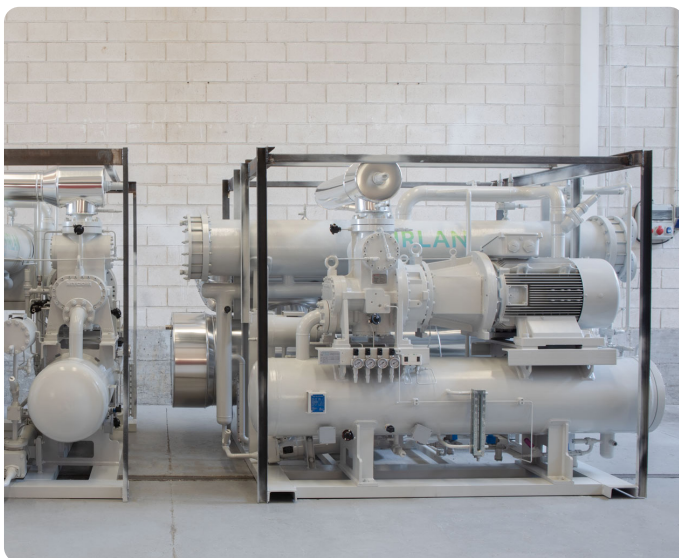
RSW CHILLERS

WE TAKE CARE OF OUR PROCESSES TO MAKE THEM MORE EFFICIENT, WITHOUT WASTING NATURAL RE-SOURCES AND ENERGY

The cold chain is essential to maintain the quality of fish and shellfish. A good cold chain determines the final value of the product.

RSW (Refrigerated Sea Water) systems are used for cooling fish catch on board and are designed for accurate water temperature control.

- LOW INSTALLATION COSTS.
- WIDE RANGE OF CAPACITIES WITH A SMALL SIZE.
- LOW AMMONIA CHARGES (OPTIONS WITH OTHER REFRIGERANTS).
- EASY MAINTENANCE.
- INSTRUMENTATION WIRED TO JUNCTION BOX.
- CONTROL PANEL MOUNTED ON BENCH OR SUPPLIED SEPARATELY
- REMOTE MONITORING VIA INTERNET



We take care of our customers supplying reliable and robust solutions

- WE INTEGRATE ELEMENTS FROM THE BEST BRANDS IN THE MARKET: MAYEKAWA, J&E HALL, GRASSO, AZCUE, DANFOSS, HOWDEN, BITZER, NIDEC, WEG, HB, ETC.
- HEAT EXCHANGERS MADE IN TITANIUM TUBE WELDED TO PLATE.
- WE ADAPT OUR STANDARD SOLUTIONS TO THE NEEDS OF EACH PROJECT
- DESIGNED TO WORK NON-STOP AT ITS OPTIMAL WORKING POINT AND MEETING THE HIGHEST DEMANDS OF THE SECTOR.



RSW CHILLERS

MODEL	COOLING CAPACITY (KW)	SHAFT POWER (KW)	M ³ /H	COMP.Q.
RSW 180	183.4	45,7	109	1
RSW 270	273	66,4	162	1
RSW 400	396.9	96,1	236	1
RSW 500	495.8	115,5	295	1
RSW 590	594.3	137,3	353	1
RSW 780	784.5	186	466	1
RSW 990	987.5	225,5	587	1
RSW 1190	1192.8	267,6	709	1

Standard conditions: delivering seawater at -1°C, with seawater at 32°C.

We care for the sea and our planet

Natural refrigerant (Ammonia, NH₃) with low environmental impact: No impact on the ozone layer (ODP=0), neither on greenhouse effect.

Innovation

Our technical team provides specific solutions and advances in the technological development of new products.

After-Sales Service

We work to ensure that our equipment does not stop. We offer a worldwide after sales service thanks to a network of logistics, spare parts and technicians.

To meet the high demands of the naval sector, we offer our MRO (Maintenance Repair and Overhaul) system either directly or through our network of collaborators.